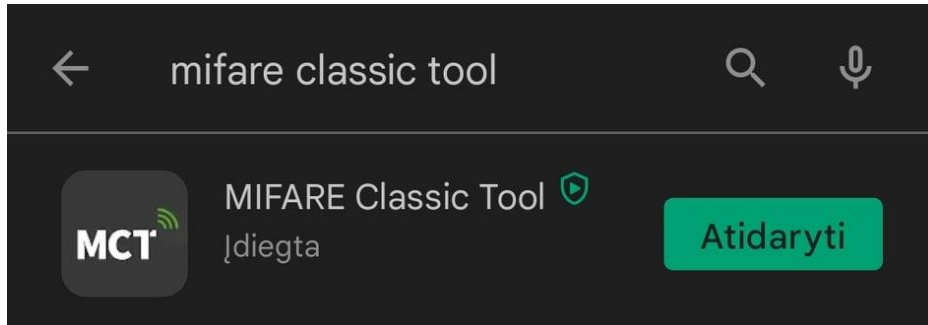
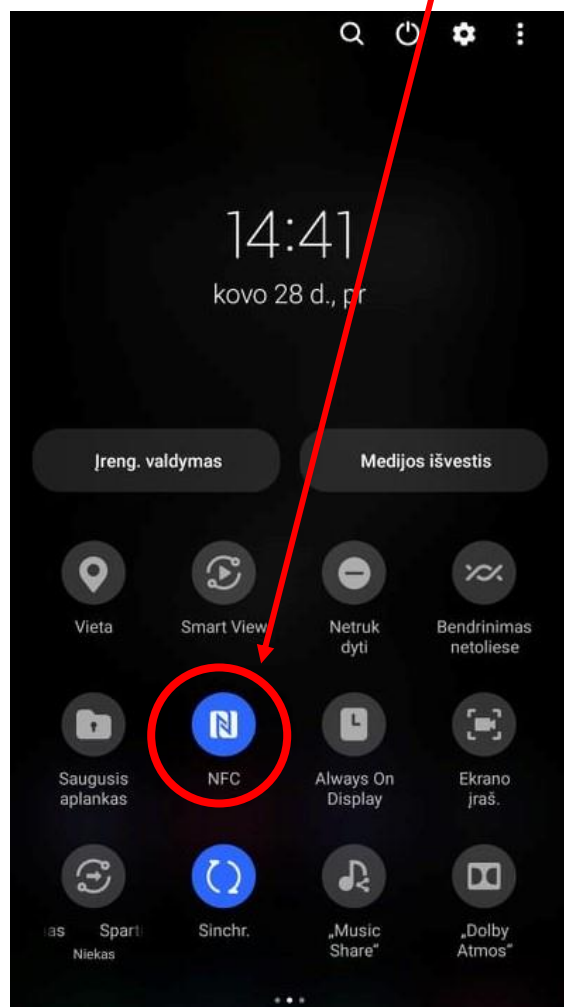


Instruction how to scan and insert your Vilniustech student (Access card) RFID number for **ANDROID** users

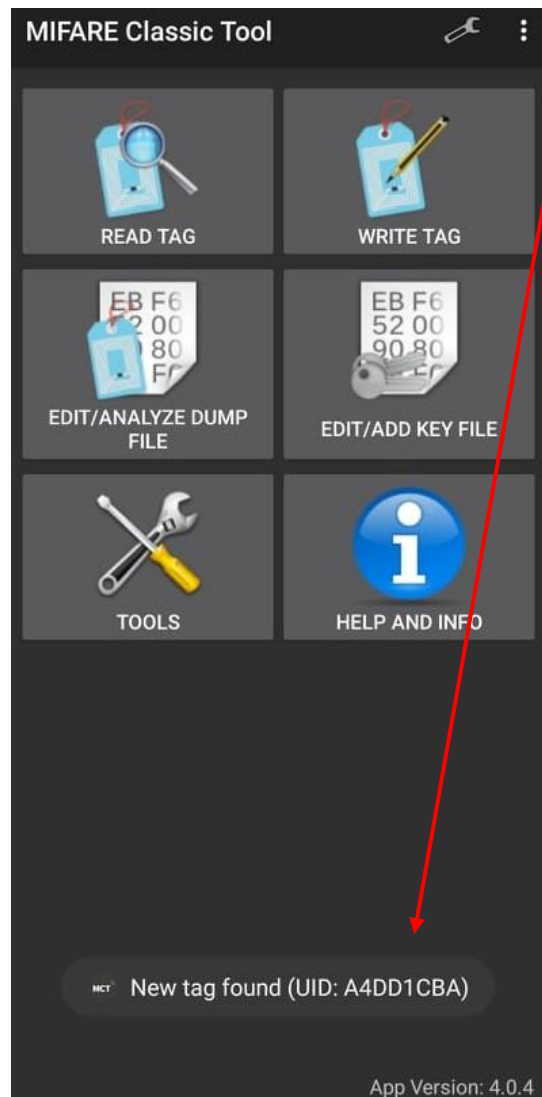
1. From Google Play download an app called „MIFARE Classic Tool“



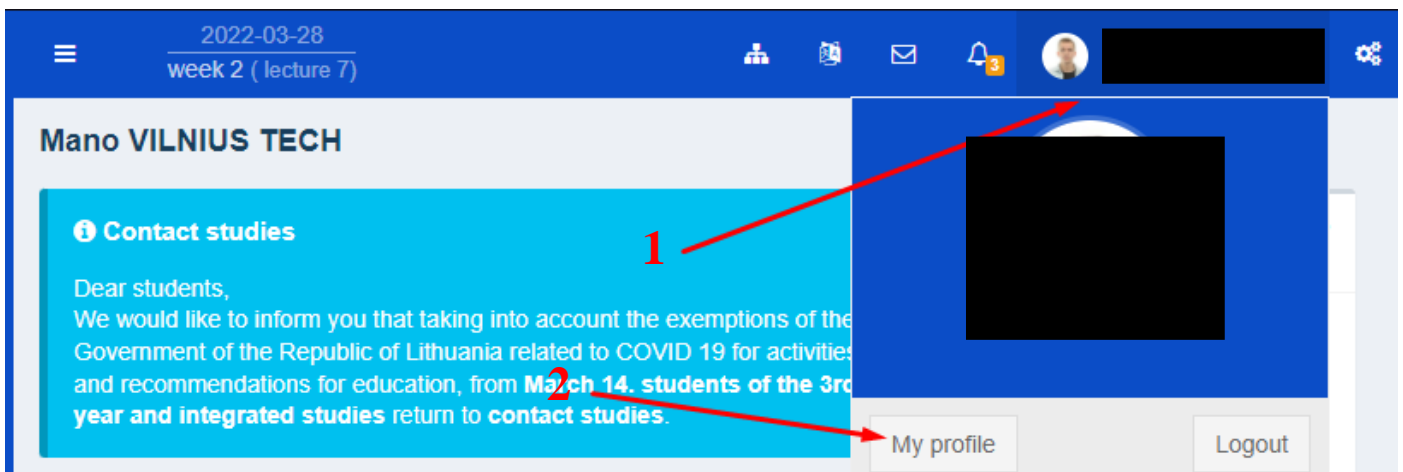
2. After downloading you need to enable NFC on your smartphone



3. Launch the app and after enabling NFC , take your Student identity card and scan it behind your phone. After a successful scan your UID will be displayed at the bottom



4. Log in to your mano.vilniustech.lt student account and go to my profile



5. Click on the RFID tab, select type: Mover Card and enter your UID code in the RFID option

The screenshot shows the 'My profile' page with the following elements:

- Header: 'My profile' and 'Dashboard > My profile'
- Navigation tabs: 'STUDENT' (active) and 'EMPLOYEE'
- Sub-navigation tabs: 'CONTACTS', 'BANK ACCOUNT', 'CHANGE PASSWORD', and 'RFID' (active)
- RFID section: A text box stating 'RFID stands for Radio-Frequency IDentification.'
- Form fields: 'Type *' (dropdown menu set to 'Mover Card'), 'RFID *' (text input field containing 'A4DD1CBA'), and 'Number *' (text input field containing 'A4DD1CBA').
- Buttons: A blue 'Save' button at the bottom of the form.

Red arrows with numbers 1 through 5 indicate the following steps:

1. Click on the RFID tab.
2. Select 'Mover Card' as the type.
3. Enter the UID code in the RFID field.
4. Enter the UID code in the Number field.
5. Click the Save button.

If you have any questions, please register your questions on portal <https://pagalba.vilniustech.lt/>, and choose **IT Helpdesk**.